

**Connecting Themes Used in Social Studies**

NAME \_\_\_\_\_

**Conflict and Change**



Important things to remember about **Conflict and Change** is:  
 Limited \_\_\_\_\_ are often the basis for power and \_\_\_\_\_.  
 \_\_\_\_\_ decisions without cultural consideration for \_\_\_\_\_ groups  
 lead to conflict and \_\_\_\_\_ instability.  
 Conflict often erupts over control of \_\_\_\_\_, \_\_\_\_\_ and  
 \_\_\_\_\_.  
 Conflicts have wide-ranging and \_\_\_\_\_ effects.  
**BUT the MOST important thing is:** \_\_\_\_\_

**Culture**



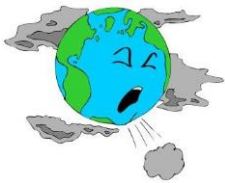
Important things to remember about **Culture** is:  
 Every place has unique \_\_\_\_\_ features that influence how  
 cultures develop.  
 Different \_\_\_\_\_ groups represent diverse cultural \_\_\_\_\_.  
 Diverse religions influence the character of a \_\_\_\_\_.  
 \_\_\_\_\_ and \_\_\_\_\_ are examples of cultural \_\_\_\_\_.  
**BUT the MOST important thing is:** \_\_\_\_\_

**Gain from trade**



Important things to remember about **trade** is:  
 Nations support \_\_\_\_\_ trade or trade \_\_\_\_\_ at different times for different  
 reasons.  
 Countries throughout the world develop different types of \_\_\_\_\_ systems.  
**BUT the MOST important thing is:** \_\_\_\_\_

**Human Environment Interaction**



Important things to remember about **Human Environment Interaction** is:  
 \_\_\_\_\_ affect how people live.  
 Humans have an impact on the \_\_\_\_\_ environment.  
**BUT the MOST important thing is:** \_\_\_\_\_

**Movement & Migration**



Important things to remember about **Movement and Migration** is:  
 \_\_\_\_\_ or \_\_\_\_\_ of people and \_\_\_\_\_ affects all societies  
 involved.

**BUT the MOST important thing is:** \_\_\_\_\_

--	--